

**A+ Prescription**  
designed by AI and Dr. Hong B. Moon (patent pending)

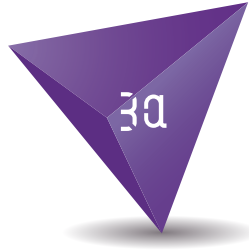
**Anchorplus DANY HT**

*Made in Korea*

**3a-i.com**

# Anchorplus

Orthodontic Mini-Implant Screw (TAD)

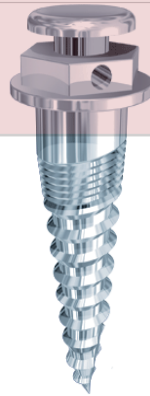


3D anchorplus

Anchor PLUS is a Solution, a Resource, an Education, it simply is More.

**AI**-aided Laser Patterning (LP) Design

NeoAnchor Plus™  
The most sophisticated orthodontic  
mini-screw system ever.



The Most Sophisticated Orthodontic Mini-Implant Screw (TAD)

The State of Art Technology (Laser Patterning)

10+ years History of the Highest Quality Product (No Side Effects)

Ai-aided Design with New A+ Prescription Brackets to minimize Human Error

The Ultimate Solutions for Challenging Non-Surgical / Non-Extraction Orthodontic Cases

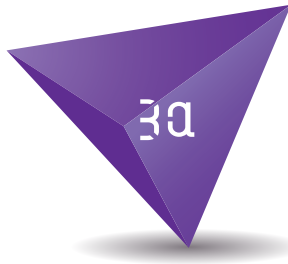
**Neo Anchorplus (LP)**

3A-i.com / 3dAnchorplus.com

# DANY

## Orthodontic White Coated Wire

# ORTHOWHITE

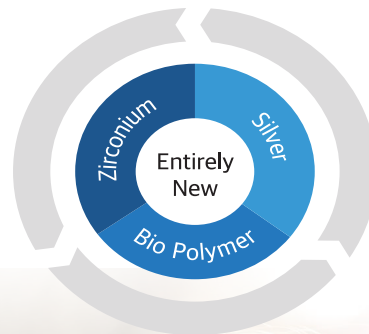


## Unprecedented supporting your everyday lifestyle

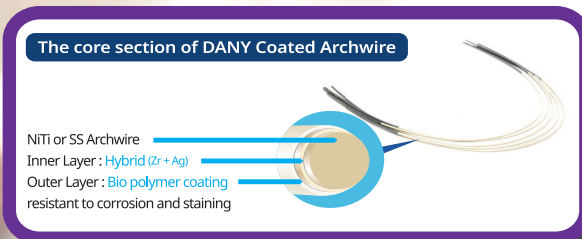
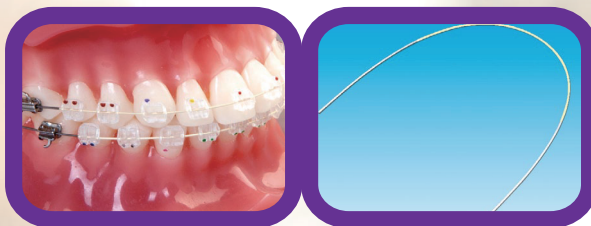
Bring to the world most creative technology  
Becoming the centric of medical product field  
Being a good neighbor to people in need

**Inner Layer** ⇒ Hybrid(Zr+Ag)

**Outer Layer** ⇒ Biocompatible polymer



- Ultra-thin and durable
- Biocompatible and biostable
- Excellent friction sliding mechanic
- Resistant to corrosion and staining
- Discolored by food
- Natural color, not by toxin material



### DANY BMT Co., Ltd.

B105 Keumkang-Penterium IT tower, 282, Hagui-ro, Dongan-gu, Anyang-Si, Gyeonggi-do, Korea (zipcode: 14056)

**TEL :** +82 (0)2 549 6258

**FAX :** +82 (0)2 549 6257

**E-mail :** sales@danytrading.net

**WWW.DANYBMT.COM**

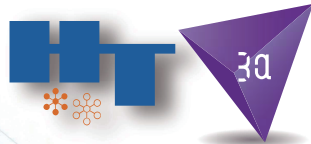
# HT

## Orthodontic Clear Ceramic Bracket

### A+ Prescriptions

designed by AI and Dr. Hong B. Moon (patent pending)

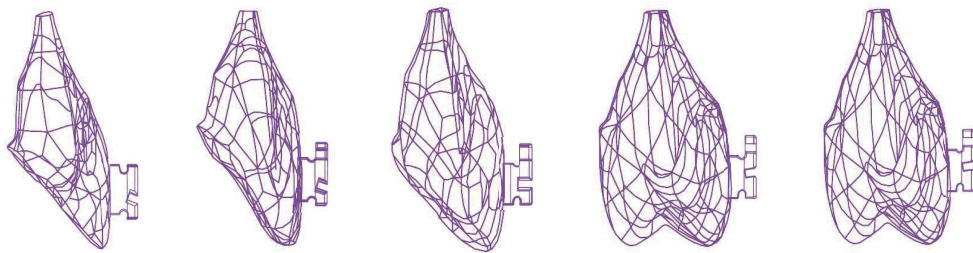
for New Orthodontic System using Mini-Screw (TAD)



# MISO A<sup>+</sup>

*“THE FIRST MANUFACTURER OF SAPPHIRE BRACKET IN KOREA”  
TO CONTRIBUTE TO ACHIEVE THE BETTER SMILE WORLD*

## AI *Optimized* New Prescription



### AI *Optimized* New Prescription

- 1 Crystal clear (Improved Mono-Crystalline Ceramic)
- 2 Maximum Durability (Minimum Breakage)
- 3 Superior bond strength and Easier to De-bond
- 4 Comfortable (Smaller size)
- 5 Compatible with Anchorplus Mini-Screw

[3A-i.com](http://3A-i.com) / [www.htdental.co](http://www.htdental.co)

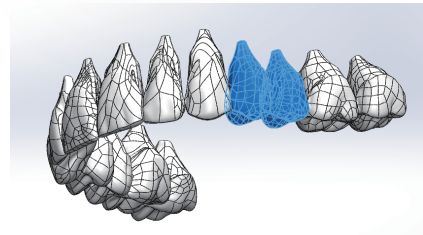
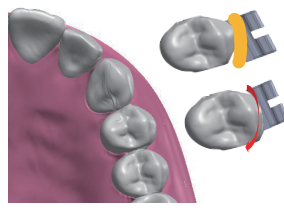
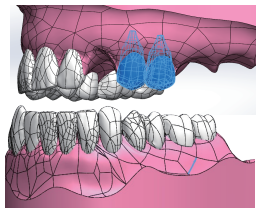






MISO A<sup>+</sup>

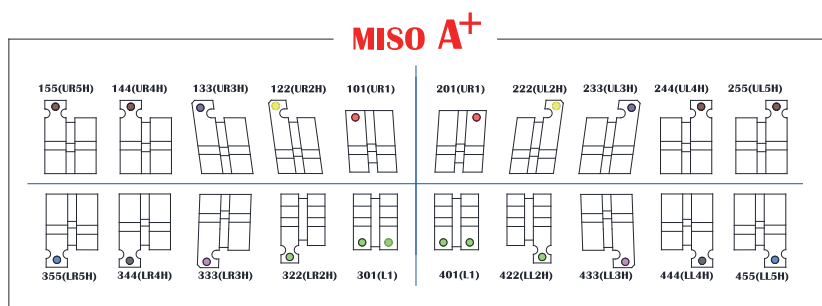
# A<sup>+</sup> Prescription (designed by AI & Dr. Hong B. Moon)<sup>Patent pending</sup>



This New A<sup>+</sup> Prescription System would be the most efficient and effective, especially for using Mini-Screws (TADs) compared to the previous prescriptions such as Roth or MBT in traditional preadjusted appliances.

MISO A+ AI Optimized New Prescription					
Tooth		Prescription			
		Torque (°)	Angulation (°)	M/D Width(mm)	Hooks
Maxillary	Central	+19.5°	+4.9°	3.30	No
	Lateral	+14.5°	+9.9°	3.00	W/H
	Cuspid	0°	+9.5°	3.40	W/H
	1st Bicuspid	-9.5°	0°	3.30	W/H
	2nd Bicuspid	-9.5°	0°	3.30	W/H
Mandibular	Central	+4.8°	0°	2.90	No
	Lateral	+4.8°	0°	2.90	W/H
	Cuspid	0°	+9.5°	3.40	W/H
	1st Bicuspid	-10.5°	+4.8°	3.30	W/H
	2nd Bicuspid	-14.9°	+4.8°	3.30	W/H
A+ Brackets have Disto-Gingival Hooks on 2,3,4 and 5					

Bracket Type Comparison Chart							
Tooth		Torque(°)			Angulation_Tip (°)		
		A+	MBT	Roth	A+	MBT	Roth
Maxillary	Central	+19.5	+17	+11	+4.9	+4	+5
	Lateral	+14.5	+10	+8	+9.9	+8	+9
	Cuspid	0	0	-2	+9.5	+8	+8
	1st Bicuspid	-9.5	-7	-7	0°	0	0
	2nd Bicuspid	-9.5	-7	-7	0°	0	0
Mandibular	Central	+4.8	-6	0	0°	0	0
	Lateral	+4.8	-6	0	0°	0	0
	Cuspid	0	0	-11	+9.5	+3	+7
	1st Bicuspid	-10.5	-12	-17	+4.8	+2	+3
	2nd Bicuspid	-14.9	-17	-21	+4.8	+2	+6
A+ Brackets have Disto-Gingival Hooks on 2,3,4 and 5							



AI-aided HT Miso A<sup>+</sup> Clear(Mono-Crystalline)Ceramic Brackets with hooks on all brackets except for Central Incisors.

Designed & Patented by

**3 Alpha**  
Satellite Office (USA)

Dr. Hong Beom Moon  
3130 Wilshire Blvd. Suite 200,  
Los Angeles, CA 90010, USA  
(213) 949-2692 (Text) hbmoon@aol.com

**3 Alpha**  
Headquarter Office (Korea)

Gangnamgu, Seolleungro 94gil 12, 11th Floor  
Seoul, 06162, Korea  
+82 (2) 568-2119  
+82 (10) 7561-2119 (Text)

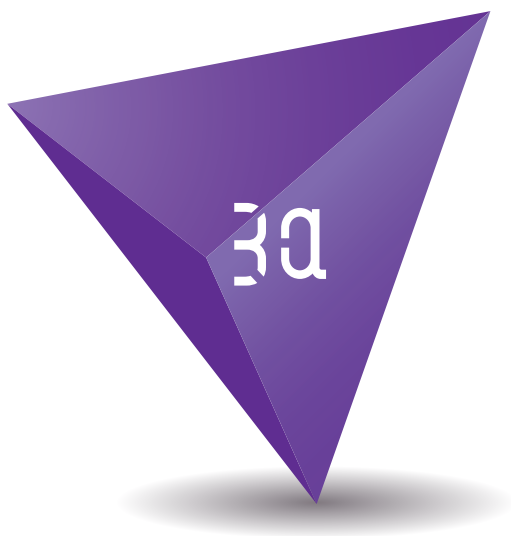
**3A-i.com**

*Made in Korea*

Manufactured by



T. +82-31-216-2080  
F. +82-31-216-2081  
htdental@htdental.co  
marketing@htdental.co  
www.htdental.co



**A+ Prescription**  
designed by AI and Dr. Hong B. Moon (patent pending)

**Anchorplus DANY HT**

*Made in Korea*

**3a-i.com**